

CENTURY

ENMORE

METRO

Factory
THEATRE

COMEDY
STORE

THE CONCOURSE
CHATSWOOD

manning



presents

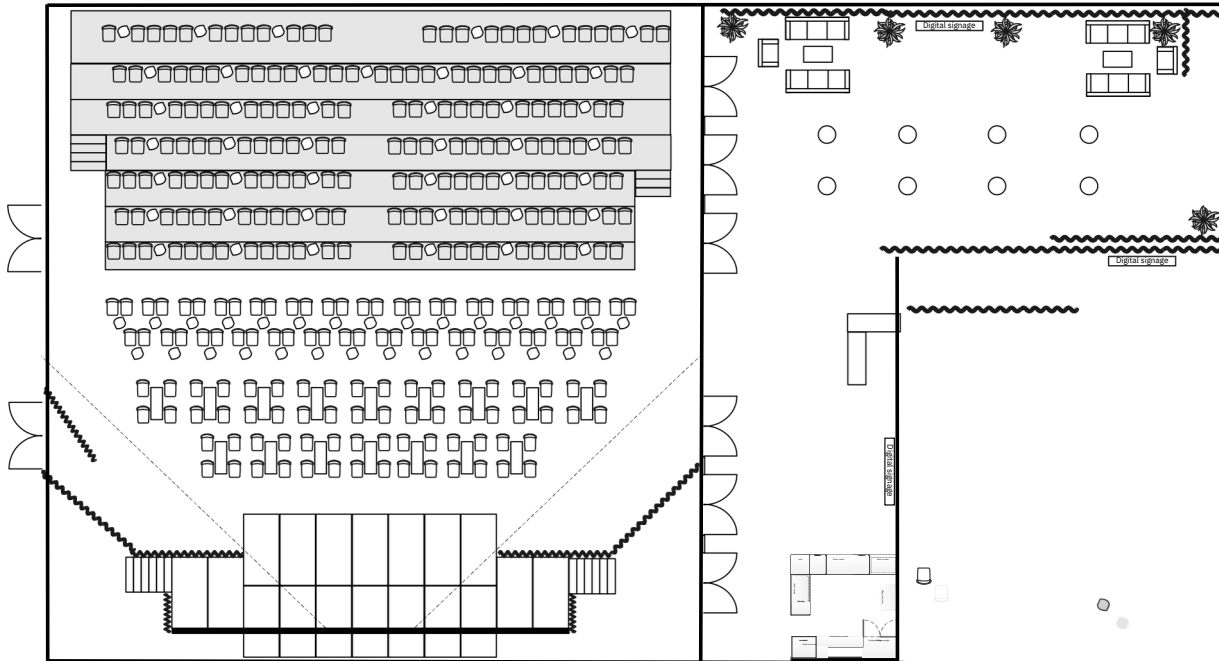
THE LOUNGE



VENUE
HIRE INFO
SHEET



ROOM CONFIGURATION



Cabaret Mode

300 Capacity

Breaks down:

64 Premium

236 General Admission Seating



PREMIUM SEATS

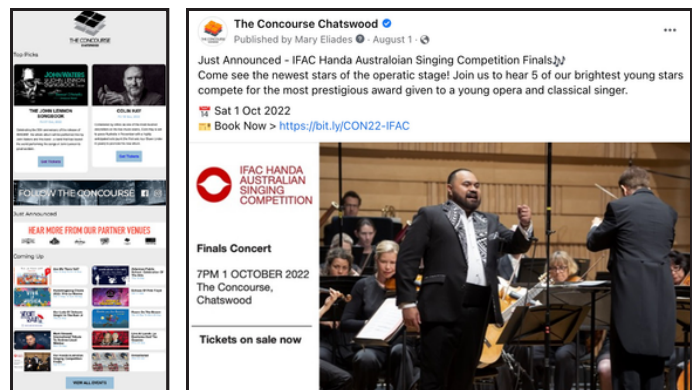
64 Premium seats at the front of the room include a premium platter with the ticket price, this will be an add on of \$25 above the net to promoter and is not included in the net ticket sales. Meat, Cheese, and Vege platters will be available for selection.



MARKETING SUPPORT

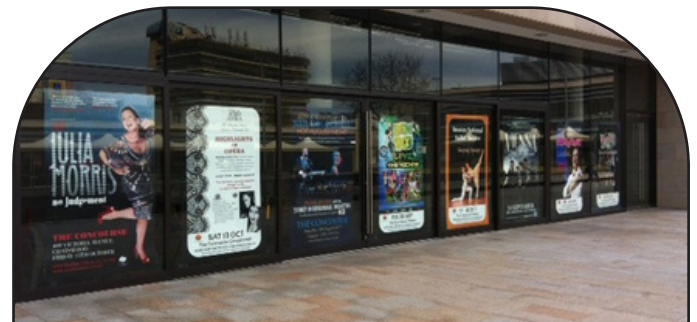
Digital

- Venue dedicated webpage and website listing
- Dedicated Email to targeted database
- Inclusion in weekly e-Newsletter campaigns (sent to our entire Concourse subscribership)
- Facebook Event Co-host
- Rotating banner ad in eNews (Enmore, Metro, Factory newsletters included)



Venue Signage

- Digital Rotating Screens
- Internal Venue Posters
- Poster & Flyer Placements at Venue
- Outdoor signage at The Concourse



PRODUCTION

Production

- FOH PA
- DVA Line Array
- 12 x DVA T8 3 way top boxes
- 3 x DVA S2585N
- 2 x 18" cariod subs
8 x DVA S1518N 18" subs

FOH

- Console Allen & Heath DLive S5000
- Waves V3 card
- A&H DM48 mix rack
- GigaAce I/O Port card

Monitors

- Console Allen & Heath CS500 (available upon request - operator required)
- 8 x QSC K2 12"
- 1 x QSC K Series Sub

Staging

- Main stage 8.4m x 5m @ 0.8m high plus wings

Lighting

- ETC Ion with fader wing
- ETC Ion with fader wing and Touchscreen
- Four Port sACN node
- 4 x moving head spot
- 4x full colour LED Profiles (FOH Specials)
- 12x Zone Front Wash LED warm white
- 18x LED Par
- Full Colour LED Room Drapeline Warmers
- LED starcloth upstage

MICS

- 1 x Shure Beta 52a
- 1 x Shure Beta 91a
- 4 x Sennheiser 904
- 3 x Rode NT5
- 6 x Shure Beta 58
- 6 x Shure SM57
- 2 x Radial DI J48
- 8 x Tall Booms
- 8 x Short Booms

Production Add Ons

Panasonic PT-MZ880B Laser projectors 8K - \$700 + GST

Projector screens - 3 available - left and right of stage, and centre of stage

L + R Screens: H: 1600mm, W: 2850mm, Centre Screen: H:1760mm, W:2900mm

Hazer - \$95 + GST

Radio Microphone - \$115 + GST each