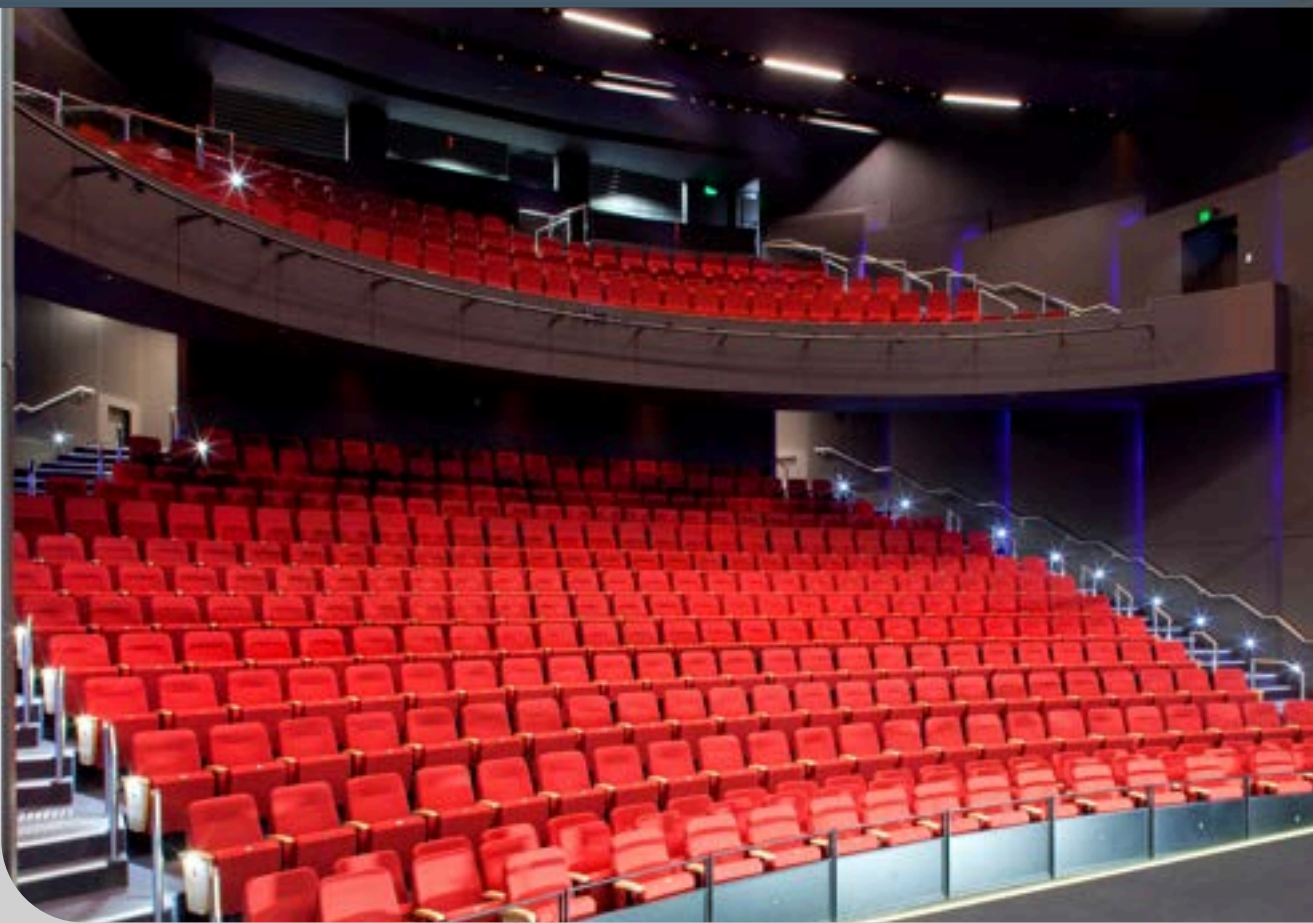


THE THEATRE

ON THE CONCOURSE



Contact Information

To speak to our Venue Booking Agent about any aspects regarding our venues please call or email via the following contacts.

Main Line:

(p) +61 2 8075 8100

Web address:

<http://theconcourse.com.au/>

Street Address:

The Concourse, Chatswood. 409 Victoria Avenue, Chatswood, NSW, 2067

Postal Address:

The Concourse, Chatswood P.O. Box 1542, Chatswood, NSW, 2057

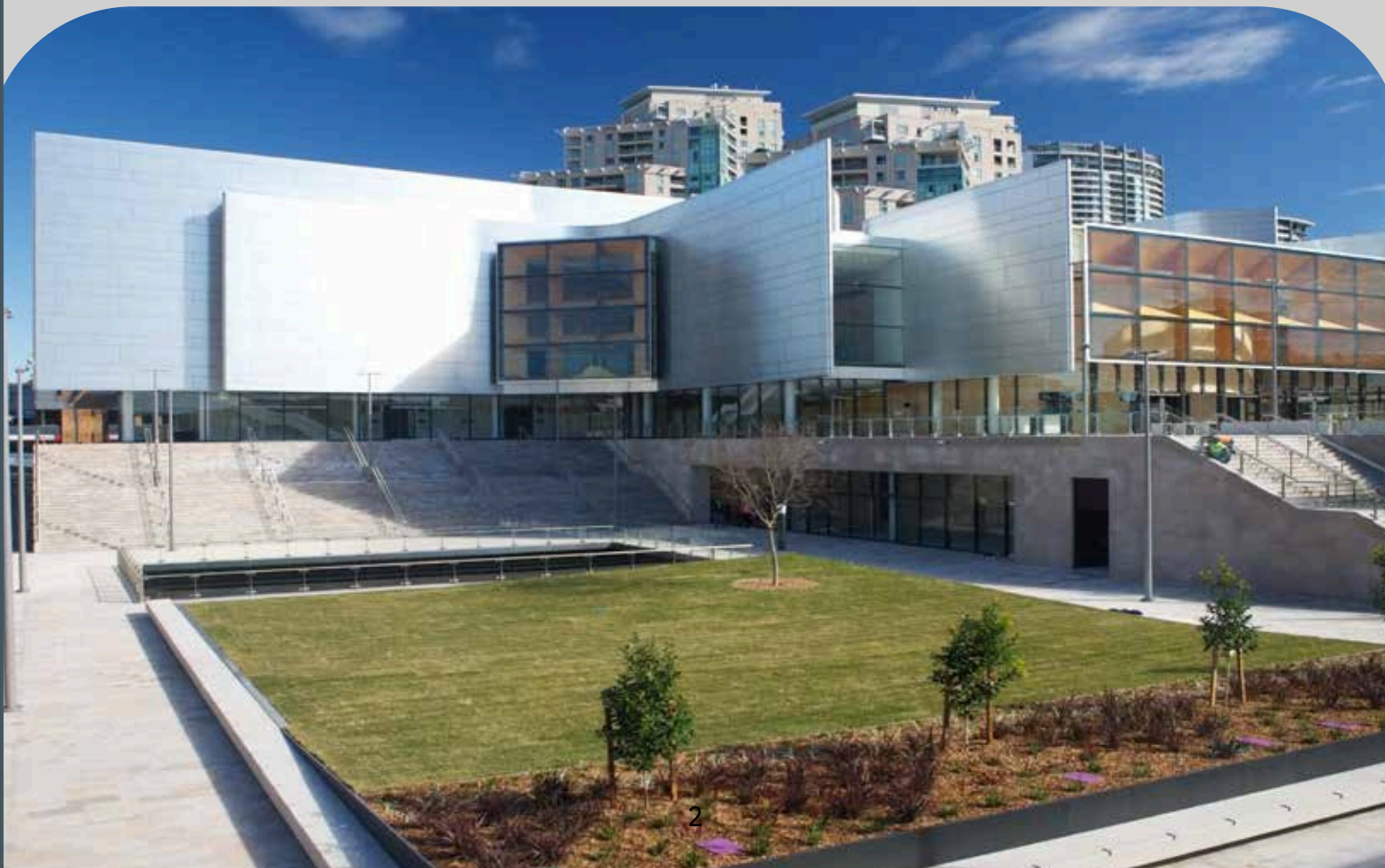
Introduction

For over 100 years, the site now home to The Concourse has been the home of performing arts, community celebrations and civic ceremonies. The Concourse carries on these traditions and provides world-class entertainment facilities for the next generation.

The site of The Concourse is possibly the most important public site owned by Willoughby City Council and certainly one of the most valuable. The many opportunities it offers to the local and regional resident, visitor and business communities demanded comprehensive, intelligent and long term planning for its redevelopment. The architectural design for The Concourse was completed in 2007 and the following year the existing buildings were demolished and the commencement of construction began.

The Concourse opened in September 2011, and continues a century old tradition of performing arts, community celebrations and civic ceremonies and offers both local and regional visitors a unique mix of venues for live theatre, dance, music, business events and exhibitions. It's facilities include a Theatre, Concert Hall, Lounge, and Rehearsal Centre.

The Concourse venue is operated and managed by Century Venues. Century is one of Australia's leading entertainment businesses, with over 30 years of experience specialising in venue management, live events and touring, and artist representation. The Company operates and manages a wide array of Sydney's best live entertainment venues including the Enmore Theatre, Metro Theatre, The Comedy Store, Factory Theatre, Manning Bar, The Mighty Vic in Newcastle and The Concourse Concert Hall, Theatre and Lounge.



The Theatre

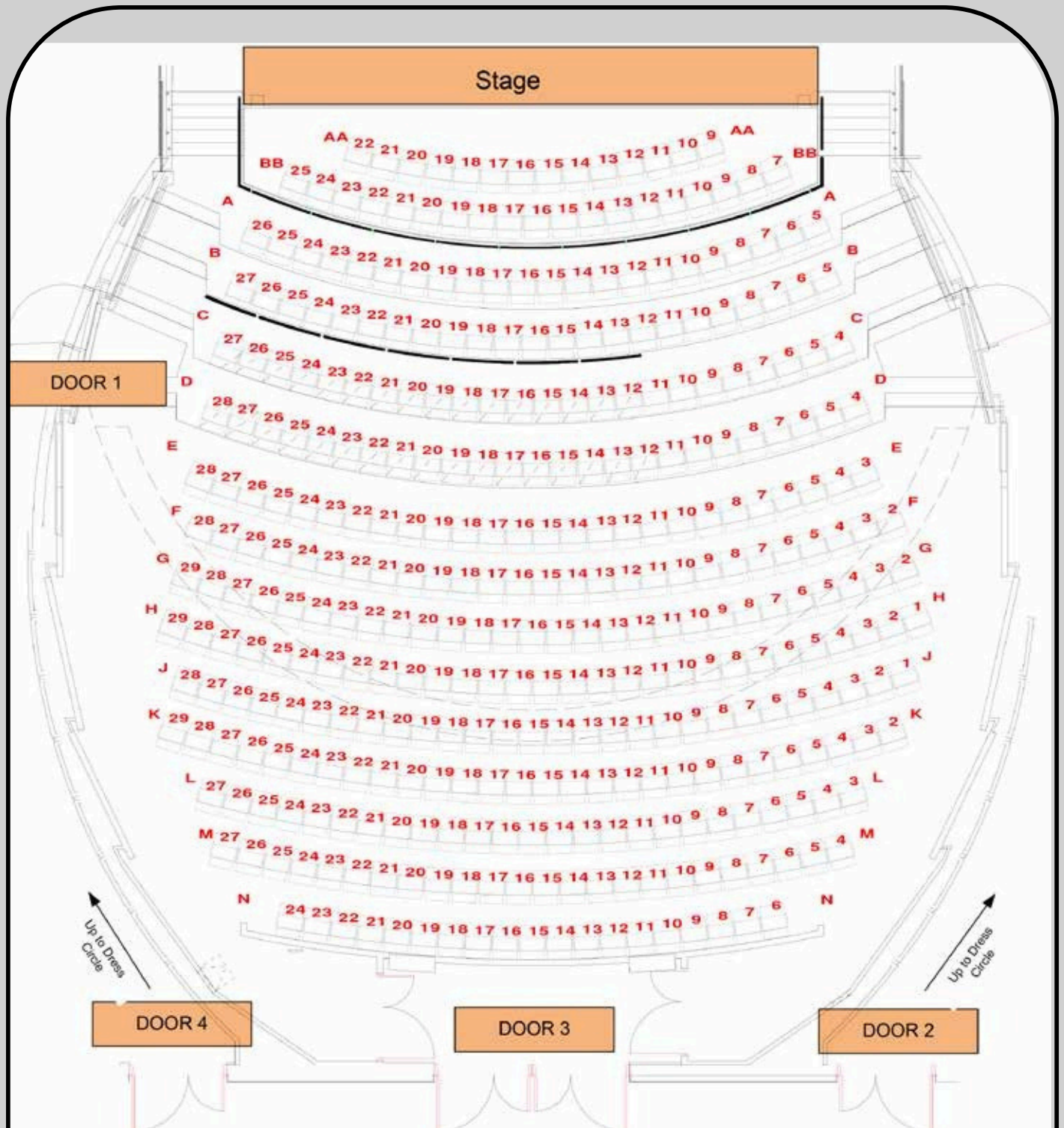
With excellent sight lines and acoustics, The Concourse Theatre is a highly impressive and adaptable venue suitable for a wide variety of performance and business events. This world class proscenium arch theatre attracts regular seasons of cultural performances, theatre, musicals, drama, live music and spoken word as well as hosting a number of business events.

Built with two tiers of seating, it can accommodate approximately 500 patrons (361 stalls, 139 circle). Features include a motorised fly tower and orchestra pit, level loading dock access, state of the art technical facilities and numerous practical support spaces. As one of the most versatile spaces at The Concourse, it is designed to meet a wide range of needs.

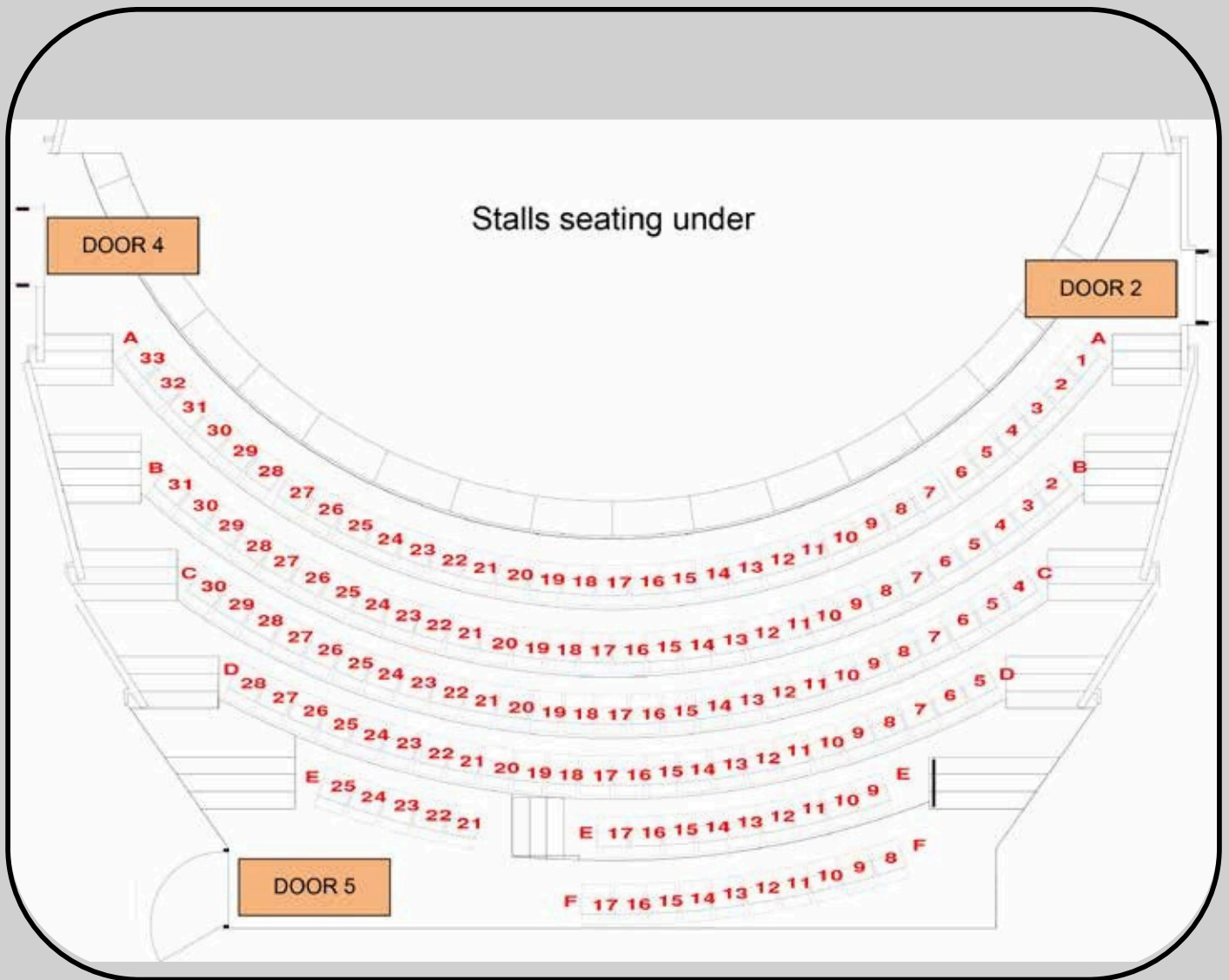


Seating

The maximum capacity for the Theatre is 500 in the stalls and dress circle. There are 361 seats in the stalls and 138 seats in the dress circle. 33 Seats are removed from the stalls (Row AA & BB) if the orchestra pit is in use.



n.b. Audio Position holds H 12-17, and J 12-17
Filming holds M 15-17, and N 15-17
other holds apply.



Accessibility

There is a total of 11 possible wheelchair positions within the Theatre. 8 in the stalls and 3 in the dress circle. Please discuss your needs with the Event Manager. There is elevator access to all levels of the Theatre from the car park and foyer levels. Back of house staff and ushers can assist patrons using a wheelchair. Wheelchair access to stage door is via a wheelchair lift. Please discuss any accessibility needs you have with the venue staff prior to arrival so that appropriate arrangements can be made.

Assisted Hearing System

An assisted hearing system operates throughout the Theatre. In the foyer patrons are advised to switch their hearing aid to the T-switch in order to hear paging announcements. Theatre program is broadcast over a dedicated FM radio transmitter. Please see front of house staff to arrange a receiver.

Public Transport

The Concourse is located in the heart of Chatswood on Sydney's North Shore. It can be reached in 15 minutes from the Sydney CBD and 30 minutes from the airport by car.

The Concourse is a two-minute walk from the Chatswood Interchange, which incorporates both train and bus terminals. From the Chatswood Interchange, walk down Chatswood Mall and onto Victoria Avenue, east of the station.

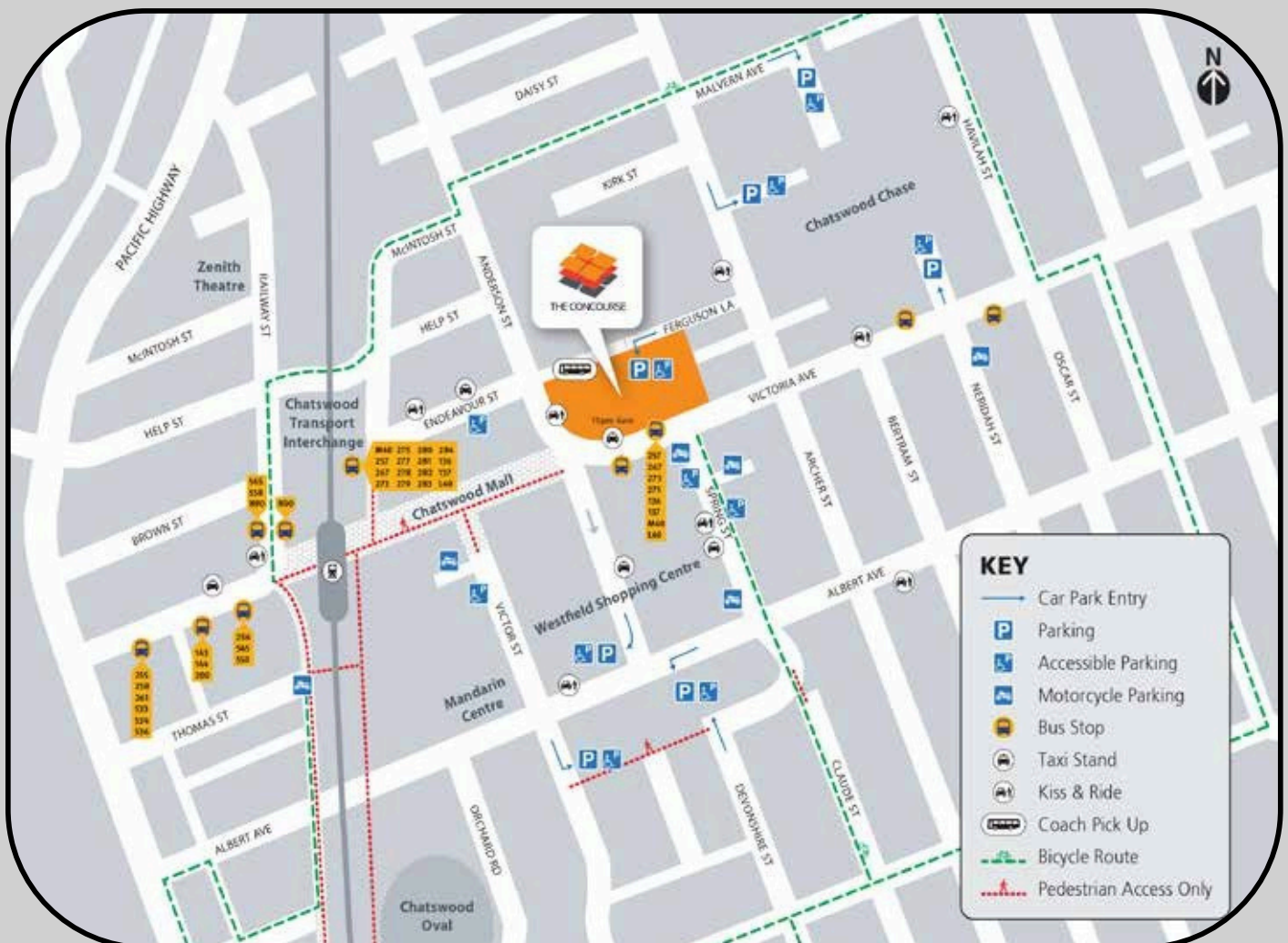
Trains

T1 North Shore and Northern Line, and Metro Train Line.

Bus

Chatswood's main bus terminal can be found at the Chatswood Interchange, just two minutes walk from The Concourse.

For train and bus timetables go to www.transportsw.info



Venue Access

Parking

Car Park Access Times

6:00am - 11:00pm Mon - Sat

8:00am - 11:00pm Sun

The Concourse car park offers on-site parking for 400 vehicles with direct lift access to the venue. Car park entrance is on Ferguson Lane via Archer Street only. The car park can be accessed from the left lane of Archer Street only. There is a luminous sign with number of available parking spaces at the intersection of Ferguson Lane and Archer Street. The car park is owned and managed by Willoughby City Council any enquiries regarding the use of the car park or loading docks should be made to the Council.

Car park operating hours are subject to change. More details about the car park can be found on [The Concourse website](#).

Loading Docks

There are two available loading docks. Both docks are shared between all venues at The Concourse and both docks are designated loading zones, regular traffic rules and time limits apply. You will need to notify venue staff of your intention to use the loading dock prior to your event. Access to the Concert Hall stage from the loading docks is via the goods lift and is subject to it's limitations.

Truck Loading Dock

Truck access to the loading dock is from Ferguson Lane via Anderson street and is at one level below stage level with stage access via the goods lift. The loading dock is fitted with a dock leveler with a range of 1180mm-2325mm from road level. Trucks must reverse to the dock and can accommodate commercial vehicles up to semi-trailer size.

Loading dock	
Height	1420mm - dock leveler fitted
Door Dimensions	3900mm (H) x 3000mm (W)

Retail Loading Dock

The retail loading dock is accessible from Ferguson lane via Archer street. Follow the directions to the underground car park. Access to the venue from the retail loading dock is via the goods lift. The initial maximum height for deliveries down to the loading dock is 3.8m and the general car park height for normal vehicles is 2.2m.

Maximum truck Length	under	6400mm
Maximum truck Height	under	3800mm

Goods Lift

The goods lift is accessible from car park level P1 and the truck loading dock. This lift requires staff access cards for operation. Prior notification is necessary if you require the Goods lift for your bump in or out.

Max. Height	2 400mm
Max. Length	4 500mm
Max. Width	2 400mm
Door width	2 100mm
Max. Weight	3.5 Tonne

Backstage Facilities

Dressing room facilities included in the hire of the Theatre are outlined below. Links to a virtual tour of each room

Dressing Room and Virtual Tour	Capacity	Location
Ground Floor Dressing Room 1	3	Ground Floor
Ground Floor Dressing Room 2	3	Ground Floor
Ground Floor Dressing Room 3	6	Ground Floor
Theatre Substage Dressing Room 4	14	Theatre
Theatre Substage Dressing Room 5	10	Theatre
Theatre Substage Dressing Room 6	10	Theatre
Theatre Substage Dressing Room 7	14	Theatre
Theatre Substage Dressing Room 8	30	Theatre
Theatre Substage Dressing Room 9	30	Theatre

Additional Dressing Room/Rehearsal Spaces

The Concourse has a Rehearsal Centre with 2 large rehearsal rooms, if you require additional spaces for rehearsals or dressing rooms, please contact your booker to book these spaces.

Stage Door

Stage door is located on Anderson Street near the corner of Ferguson Lane. All clients must enter and exit through Stage Door in order to be signed in or out.

Catering

Catering can be provided for all venues for patrons, VIPs, performers and crew. Please discuss your catering requirements with your venue contact.

Production Office

If you require a production office, a dressing room can be designated. Phone line and internet access can be made available by prior arrangement.

Laundry

A laundry is available on the Theatre Sub level and includes washing machines, dryers, irons, ironing board and clothes racks. Steaming is not permitted in dressing rooms and must be contained to the Laundry. Heavy or constant steamer use may require venue isolation. Please discuss with your Event Manager if you require steaming.

Conditions of Use

Access

Access to back of house areas is by prior arrangement and via Stage Door only. All visitors must sign in and out at the Stage Door. Stage access may be restricted at any time by staff as required for safety reasons. At least one member of the technical staff must be on site whilst the hirer has access to the stage area. A detailed production schedule is to be provided and approved by management prior to the commencement of your event.

Risk Management

In accordance with NSW WHS legislation, risk assessments and management plans are required during pre-production for any activity performed in the venues. Risk assessment needs to consider the risks associated with your specific event. It is the hirers responsibility to provide risk management plans to the venue prior to your arrival. Our staff are able to provide guidance if required.

Fire Safety

During the unlikely event of a fire emergency please follow the instructions of the venue staff. It is important that patrons familiarise themselves with their closest exit and meeting points. If theatrical smoke, haze, pyrotechnics or costume steaming are to be used during your event a fire warden must be on site during performances and is charged to the event. Please discuss this requirement with the production team prior to your event. Failure to notify management prior to your event may incur additional fees and charges as well as cause interruptions to your production.

Electrical

All electrical equipment brought on sight must have a compliant electrical test tag and be in reasonable working condition. Venue staff may reject equipment at their sole discretion if they believe it presents a reasonable danger.

Restricted Activities

Smoking is not allowed in any interior or exterior area of The Concourse. The Concourse is a smoke free environment.

Venue Staff

It is a condition of entry that all patrons will comply with any reasonable request from venue staff. The Venue has a responsibility to provide a safe workplace for its staff. Harassment or unsafe requests will be handled at the discretion of the venue supervisor. Staff are entitled to a minimum half hour break every 5 hours. Whilst every effort is made to minimise any disruption, during this time stage access may be limited. Technical staff are required to be on site a minimum half hour prior to venue access time and remain half an hour after the venue is cleared. Please discuss your production schedule with management prior to your production to ensure adequate time has been allocated.

Venue Specifications

The Concourse Theatre is a Proscenium Arch theatre with full fly facilities. The stage is hardwood floor covered in Masonite sheets painted black. It has a removable floor with full sub-stage. Screwing into the surface is permitted however large holes need to be approved by venue management. There is a stage crossover behind the upstage fly lines.

Surface	Hardwood floor overlaid with Masonite sheeting painted black.
Maximum Loading	7.5kPa Live load limit (Dynamic) 10kN (1019kg) Point load limit.
Stage Rake	0 degrees (flat)
Stage Care	The use of standard screw sizes is permitted (e.g. 8 gauge) for fixing to the timber stage area. Larger holes may be permitted at the discretion of venue management. Painting of the stage may also be permitted at the discretion of management with prior notice. Fees apply for repainting.

Key Dimensions

Setting Line	Downstage Edge of LED Strip on Apron	
Proscenium	Width (adjustable): 10-14m ; House Standard: 12m Height (adjustable): 4-7m ; House Standard: 6.5m	
Total Stage Area	Width (wall to wall incl. Wings)	23 450mm
	Depth (Edge of Apron to rear wall)	11 030mm
Void Dimensions	10 000mm (w) x 9150mm (d)	

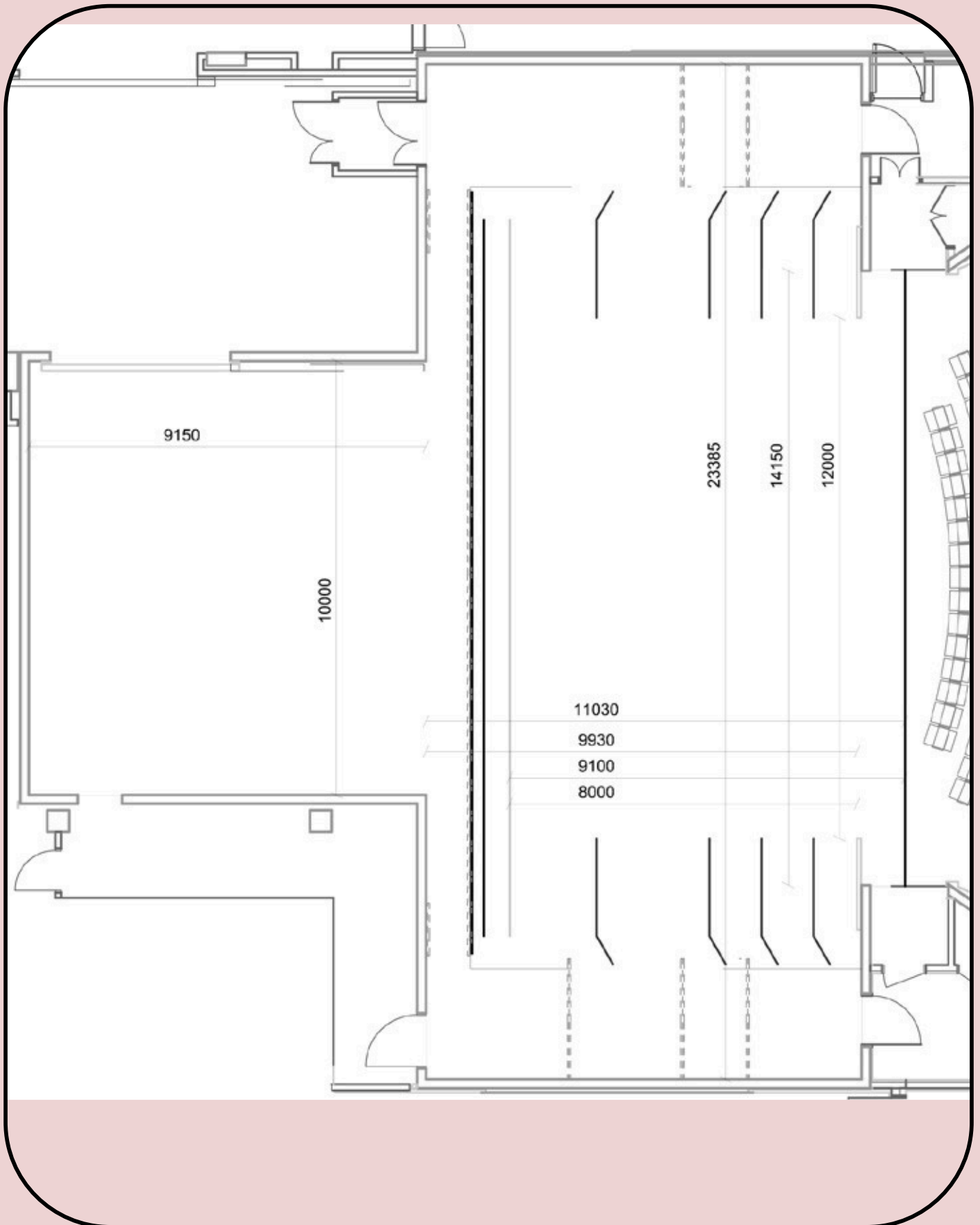
Distances

From	To	Distance (mm)
Setting Line	Edge of Apron	100
	House Curtain	450
	Downstage edge of Orchestra Pit	2 750
	First Fly Line (downstage)	1 500
	Last Fly Line (upstage)	9 700
	Rear Wall	10 900
	Bridge 1	13 300
	Bridge 2	15 800
	Control Room	22 400
	Line Array	20 700
Control Room Center Line	OP Wall (or Obstruction)	11 550
	PS Wall (or Obstruction)	15 800
Stage Floor	Underside of Grid (Max total height)	16 670

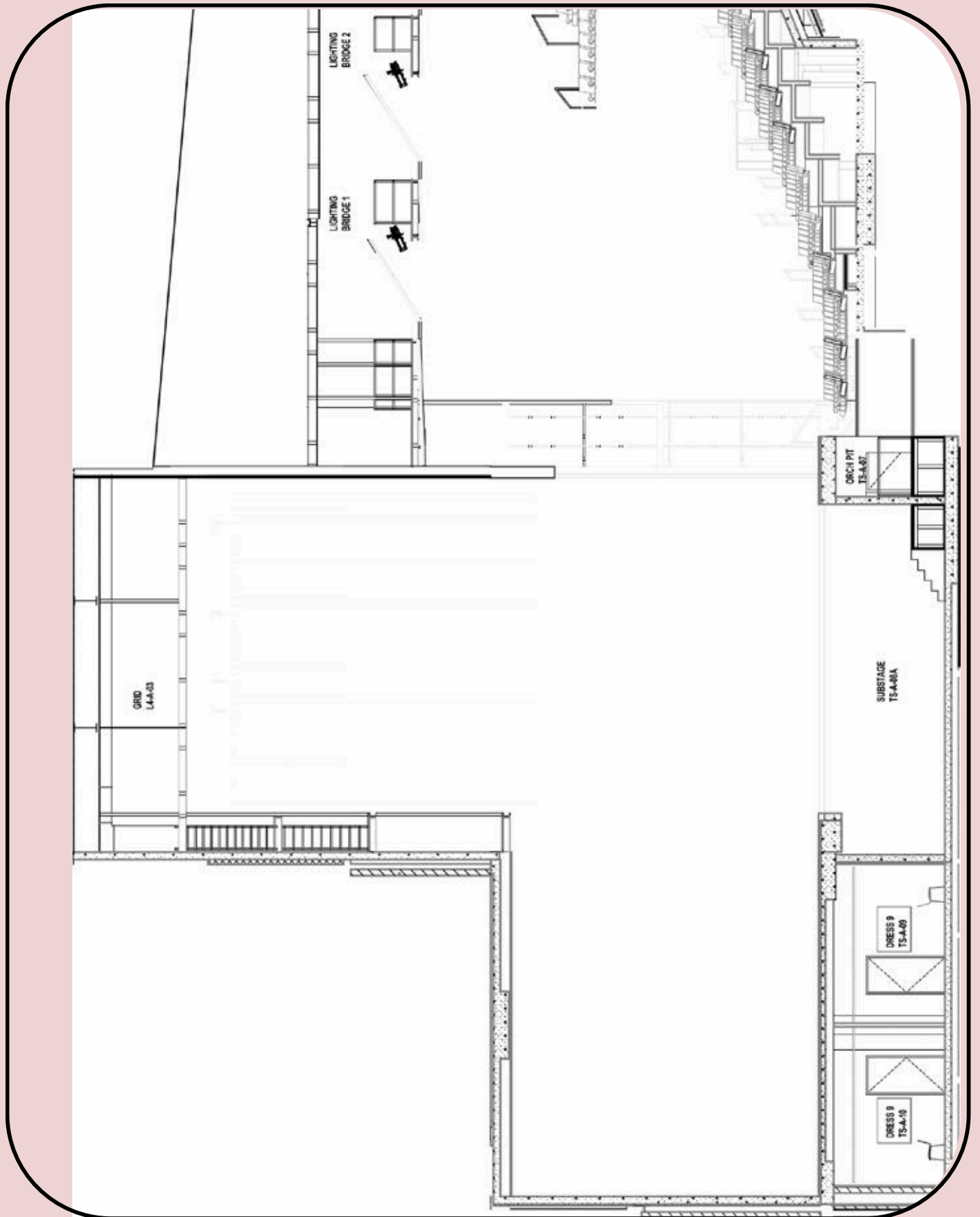
Overhead Obstructions

Center Line	OP Gallery	8 650
	PS Gallery	8 890
Setting Line	Upstage Gallery	16 980
Stage Floor	Gallery	8 100

Stage Plan



Side Elevation



Stage Machinery

The Staging machinery and fly systems in The Theatre can only be operated by approved Concourse personnel. If any changes are made to the standard fly plot they must be reset at the conclusion of your hire.

Orchestra Pit or Stage Extension

The Theatre has a full motorised orchestra pit that can be set at any height. In the standard configuration, the Orchestra pit makes up part of the stage floor providing maximum seating capacity with the inclusion of rows AA and BB.

Length	11 000mm
Depth at CL	2 600mm
Total Area	25m ²
W.L.L.	6 Tonne

Raised Position

The Orchestra pit can be raised to the same height as the stage level providing a curved extension of 2 750mm at center. With the stage extension in place there is restricted viewing from the theatre circle seating and is generally taken off sale when used.

Orchestra Pit

The Orchestra pit can be set to any level. Orchestra position is 1605mm below auditorium level. Sub-stage level is 2350mm below auditorium position. At sub-stage level the orchestra pit has a depth on center of 4250mm and a total area of 39m².

When the Orchestra Pit is lowered, we provide a net for safety of performers, the Orchestra pit has a hole for the Conductors position.

Fly System

The Theatre is fitted with a state of the art powered winch line fly system. There are 40 lines above the main stage and 2 panorama (transverse) bars (1 per side). The flying system can be operated PS and OP at stage level, Gallery 2 and Gallery 3. Standard operating position is Stage level Prompt Side.

Batten Drift	15 500mm
Batten Type	75mm x 50mm Rectangular Hollow Steel
Batten Length	16 500mm
Batten Extension	N/A
Batten Pick-up	6 at 3 000mm centers
Batten point load	200kg
Batten W.L.L.	500kg incl. Batten
Cradle Capacity	N/A
LX Bars can be swung	NO
Fly bars can be swung	YES

Standard Fly Line Allocation

All measurements (in mm) taken from setting line.

Please note: LX bars cannot be swung. Fly bars either side of LX Lines are unavailable due to obstructions. Line 41 & 42 are panorama bars.

Line	Distance	Standard	Line	Distance	Standard
1	1 500	House Curtain	22	5 700	
2	1 700	Black Scrim	23	5 900	
3	1 900	Border 1	24	6 100	Border 3
4	2 100	Legs 1 (unavailable)	25	6 300	(unavailable)
5	2 300	LX 1	26	6 500	LX 3
6	2 500	(unavailable)	27	6 700	(unavailable)
7	2 700		28	6 900	Border 4
8	2 900		29	7 100	Legs 4 (unavailable)
9	3 100		30	7 300	LX 4
10	3 300	Legs 2	31	7 500	(unavailable)
11	3 500		32	7 700	
12	3 700		33	7 900	
13	3 900		34	8 100	
14	4 100		35	8 300	
15	4 300	Border 2	36	8 500	
16	4 500	(unavailable)	37	8 700	Border 5
17	4 700	LX 2	38	9 100	Full Stage Black
18	4 900	(unavailable)	39	9 300	
19	5 100		40	9 700	Cyclorama
20	5 300	Legs 3	41	-	Pan Bar (PS)
21	5 500	Half Stage Curtain (Full Drape on Track)	42	-	Pan Bar (OP)



Staging Equipment

Elevated Work Platform

The Concourse has an Elevated Work Platform on site to be shared across all venues. Outriggers must be used at all times. Operators must provide evidence of EWP training prior to use (Yellow Cards) subject to approval of management. Due to the shared nature of the EWP across all venues, availability can not be guaranteed.

Model	JLG-30AM
Max. Height	9m

Staging Rostra

The Concourse has a number of Megadeck stage Rostra available for use in any of our venues. There are additional set up and hire costs associated with the use of the staging. Availability cannot be guaranteed and will need to be prearranged. All decks are of aluminium construction with black plywood face. Dress Skirting, chair stops and 3 different height legs are all available.

12x 2 400mm x 1 200mm Black Timber Deck
4x 1 200mm x 1 200mm Black timber Deck
Deck Heights

2x 600mm Black Timber Stair Treads
 2x 300mm Black Timber Stair Treads
 150mm (All), 300 & 600mm (14 sets),
 900mm (5 sets).

Other Equipment

A full range of Orchestral furniture including conductor's podium, music stands, bass stools, and orchestra chairs are also available on site. Custom sized Tarkett dance floor is also available covering the entire stage area up to the cyclorama. Any additional equipment will attract a hire fee. Please discuss your requirements with the venue staff.

Power

There are a number of standard GPO and 3-phase power outlets around the venue. Each outlet is on a discrete circuit.

Area	Power Outlets
Control Room	2x 40A 3 Phase Outlets
Bridge 1	2x 40A 3 Phase Outlets
Bridge 2	1x 40A 3 Phase Outlet
Forestage	3x 40A 3 Phase Outlets
Grid Gallery	3x 40A 3 Phase Outlets
Level 2	2x 40A 3 Phase Outlets
Gallery Level	2x 40A 3 Phase Outlets
3 Stage Level	4x 40A 3 Phase Outlets 2x 20A Single Phase Outlets (on 32A circuits)
Sub Stage	2x 40A 3 Phase Outlets
Scenery Dock	1x 40A 3 Phase Outlet 1x 200A 3 Phase Power Lock Supply (10mm lugs not supplied)
Loading Dock	1x 40A 3 Phase Outlet



Audio

Loudspeaker System

The Theatre has a left-right Line array as well as a support fill systems to provide even coverage across the venue. A left-right ground stack is also available with subs, and is recommended for amplified music.

Stereo Array (L/R)

6	Martin Audio W8LM (flown)
2	Martin Audio W8LMD (flown)
1	Martin Audio WMX Subwoofer (flown)

Support Fill System

Front Fill	5	Martin Audio AQ6
Subwoofers	2	Martin Audio S2585n

Control Surface

The Theatre has a Allen & Heath dLive S7000 or C1500 console (depending on needs) with an Allen & Heath DM48 Mix Rack and two DX168 stage boxes. There is provision for the mixrack to be positioned in a number of locations around the stage or orchestra pit and connected via data M-ACE link. Larger consoles come with a Waves card to allow for multi-track recording or virtual soundchecks. Eight ME-1 personal mixers are also available for additional hire.



Mics and DI's

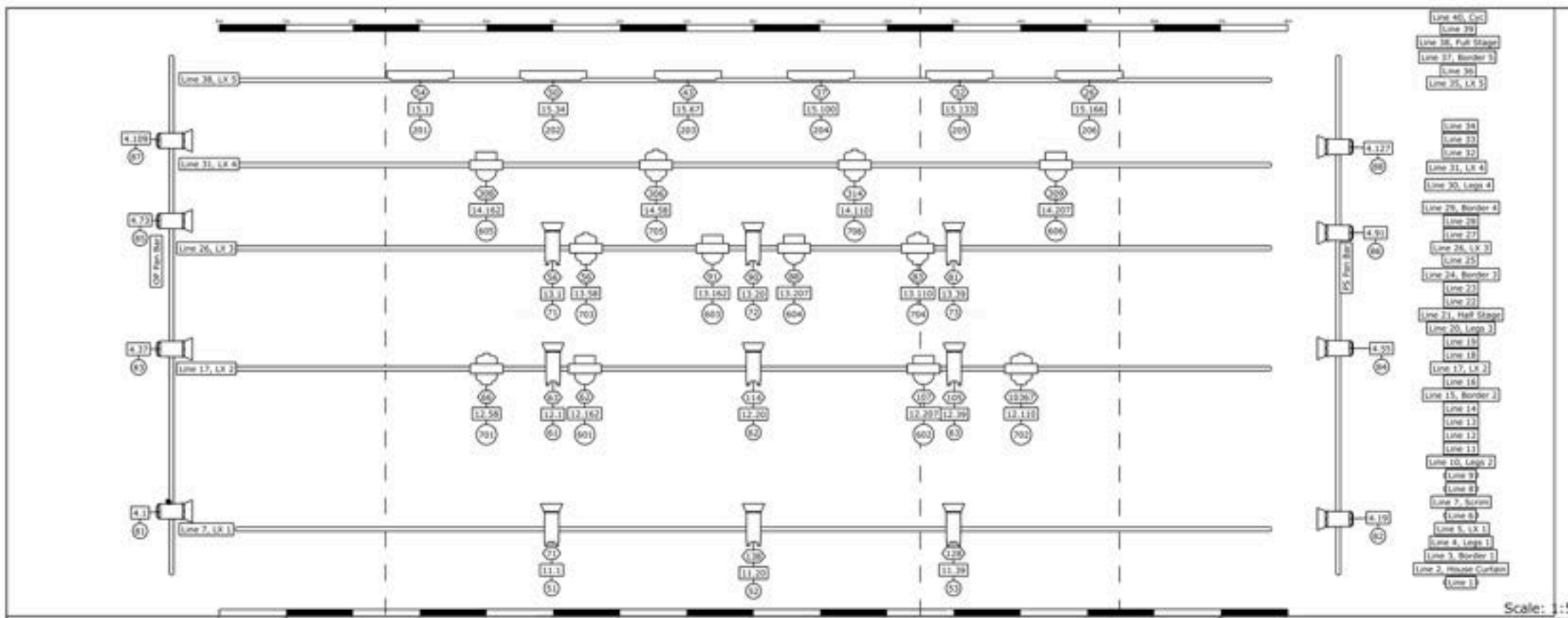
Mic/DI	Quantatiy
Mic Shure SM57	8
Mic Shure SM58	6
Mic Shure Beta 57a	2
Mic Shure Beta 58a	2
Mic Shure Beta 52a	1
Mic Sennheiser e904	1
Mic Sennheiser e835s	1
Mic Sennheiser e614	2
Mic DPA 2011	4
Mic Audio Technica ae6100	2
Mic Audio Technica ae5400	1
DI Radial Pro D1	1
DI Radial Pro D2	2
DI Radial JDI Mono	3

Additional Microphones can be hired through the Concourse including wireless microphones, Choir mics, tap mics, etc. Contact the Concourse production team with any additional requirements.

Lighting

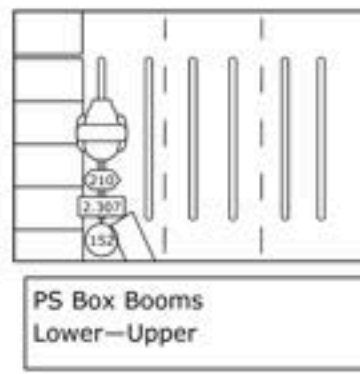
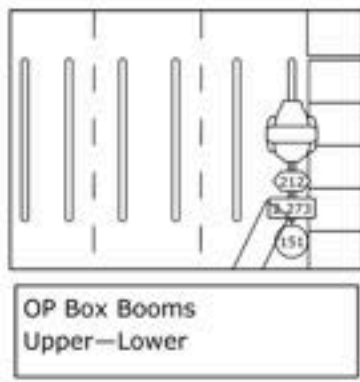
Fixture ID	Fixture Profile	DMX Address	Location	Focus	Channel Mode	DO #	Notes
FACE WASH							
1	EclProfile CT+IP	2.001	Bridge 2	DSOP	RAW 16 Bit		274
2	EclProfile CT+IP	2.017	Bridge 2	DSOP	RAW 16 Bit		270
3	EclProfile CT+IP	2.033	Bridge 2	DSC	RAW 16 Bit		272
4	EclProfile CT+IP	2.049	Bridge 2	DSC	RAW 16 Bit		262
5	EclProfile CT+IP	2.065	Bridge 2	DSPS	RAW 16 Bit		259
6	EclProfile CT+IP	2.081	Bridge 2	DSPS	RAW 16 Bit		263
7	EclProfile CT+IP	2.097	Bridge 2	USOP	RAW 16 Bit		273
8	EclProfile CT+IP	2.113	Bridge 2	USOP	RAW 16 Bit		269
9	EclProfile CT+IP	2.129	Bridge 2	USC	RAW 16 Bit		271
10	EclProfile CT+IP	2.145	Bridge 2	USC	RAW 16 Bit		261
11	EclProfile CT+IP	2.161	Bridge 2	USPS	RAW 16 Bit		260
12	EclProfile CT+IP	2.177	Bridge 2	USPS	RAW 16 Bit		264
FOH Special							
31	EclProfile CT+IP	2.193	Bridge 2	Special	RAW 16 Bit		275
32	EclProfile CT+IP	2.209	Bridge 2	Special	RAW 16 Bit		268
33	EclProfile CT+IP	2.225	Bridge 2	Special	RAW 16 Bit		267
34	EclProfile CT+IP	2.241	Bridge 2	Special	RAW 16 Bit		266
35	EclProfile CT+IP	2.257	Bridge 2	Special	RAW 16 Bit		258
Curtin Warmer							
41	PAR38	1.294	Dress Circle		DIMMER		294
	PAR38	-	Dress Circle				294
	PAR38	-	Dress Circle				294
	PAR38	-	Dress Circle				294
Center Light							
	Pin Spot	1.287	Dress Circle	Red Centre Light	DIMMER		287
LX 1 Fres							
51	Eclfresnel ct+m	11.001	LX 1	DSOP	RAW 16 Bit		71
52	Eclfresnel ct+m	11.020	LX 1	DSC	RAW 16 Bit		138
53	Eclfresnel ct+m	11.039	LX 1	DSPS	RAW 16 Bit		128
LX 2 Fres							
61	Eclfresnel ct+m	12.001	LX 2	CSOP	RAW 16 Bit		63
62	Eclfresnel ct+m	12.020	LX 2	CS	RAW 16 Bit		114
63	Eclfresnel ct+m	12.039	LX 2	CSPS	RAW 16 Bit		105
LX 3 Fres							
71	Eclfresnel ct+m	13.001	LX 3	USOP	RAW 16 Bit		56
72	Eclfresnel ct+m	13.020	LX 3	USC	RAW 16 Bit		90
73	Eclfresnel ct+m	13.039	LX 3	USPS	RAW 16 Bit		81
Side Fres							
81	F300IIFC	4.001	OP		18 Ch		
82	F300IIFC	4.019	PS		18 Ch		
83	F300IIFC	4.037	OP		18 Ch		
84	F300IIFC	4.055	PS		18 Ch		
85	F300IIFC	4.073	OP		18 Ch		
86	F300IIFC	3.091	PS		18 Ch		
87	F300IIFC	4.109	OP		18 Ch		
88	F300IIFC	4.127	PS		18 Ch		
V4's							
701	V4	12.058	LX 2		Extended		66
702	V4	12.110	LX 2		Extended		103
703	V4	13.058	LX 3		Extended		56
704	V4	13.110	LX 3		Extended		83
705	V4	14.058	LX 4		Extended		306
706	V4	14.110	LX 4		Extended		314
MAC VIPER							
151	Mac VIPER	2.273	PS Side		16 Bit Extended		212
152	Mac VIPER	2.307	OP Side		16 Bit Extended		200
Z7's							
601	Z7	12.162	LX 2		45 Ch		62
602	Z7	12.207	LX 2		45 Ch		107
603	Z7	13.162	LX 3		45 Ch		91
604	Z7	13.207	LX 3		45 Ch		88
605	Z7	14.162	LX 4		45 Ch		308
606	Z7	14.207	LX 4		45 Ch		309
Cyc Lights							
201	Ovation CYC 3FC	15.001	LX 5		33 Ch		54

202	Ovation CYC 3FC	15.034	LX 5	33 Ch	50
203	Ovation CYC 3FC	15.067	LX 5	33 Ch	43
204	Ovation CYC 3FC	15.100	LX 5	33 Ch	37
205	Ovation CYC 3FC	15.133	LX 5	33 Ch	32
206	Ovation CYC 3FC	15.166	LX 5	33 Ch	26
Hazer					
420 Init					
421 Hazer					
422 Fan					
House Lights					
1001 P1	House Light	3.451	Front House	Dimmer	
1001 P2	House Light	3.452	-	Dimmer	
1002 P1	House Light	3.454	Bridge 1 House	Dimmer	
1002 P2	House Light	3.455	-	Dimmer	
1003	House Light	3.453	Upper Balcony House	Dimmer	
1004	House Light	3.456	Front Circle House	Dimmer	
1005	House Light	3.457	Balcony House	Dimmer	
Lock Lights					
1051	Lock Lights	3.459	Door 2 Outer	Dimmer	Part at Full
1052	Lock Lights	3.465	Door 1	Dimmer	Part at Full
1053	Lock Lights	3.480	Intraaid Lock Lights	Dimmer	Part at Full
1054	Lock Lights	3.501	OP Circle	Dimmer	Part at Full
1055	Lock Lights	3.502	PS Circle	Dimmer	Part at Full
1056	Lock Lights	3.503	Door 5	Dimmer	Part at Full
Fluro					
1101	Fluro	3.508	Blo Truce	Dimmer	
1102	Fluro	3.504	Fluro	Dimmer	
1103	Fluro	3.505	Fluro	Dimmer	
1104	Fluro	3.506	Fluro	Dimmer	
1105	Fluro	3.507	Fluro	Dimmer	
Blues					
1111	BLUES	1.171	PS Pan Blues	Dimmer	Park at 10
1112	BLUES	1.181	OP Pan Blues	Dimmer	Park at 10
1113	BLUES	1.255	AMP Room Blues	Dimmer	Park at 10



Symbol key

	EcIProfile CT+SP 26* (12)		Source Four PAR EA (4)
	EcIProfile CT+M (9)		MAC Viper Profile (2)
	F300IIFC (8)		Par38 (1)
	Ovation CYC 3 FC (6)		
	Wash ZB7 (6)		
	V4 (6)		
	EcIProfile CT+SP 15-30* (5)		



Example:

Focus	
Gel	
Gobo	
Fixture	
DO	138
Address	11.20
Channel	52

Project	Concourse Theatre Standard 2025	
Project location	Concourse Theatre	
Drawing author	Ryan Barbero / Peter Miller	